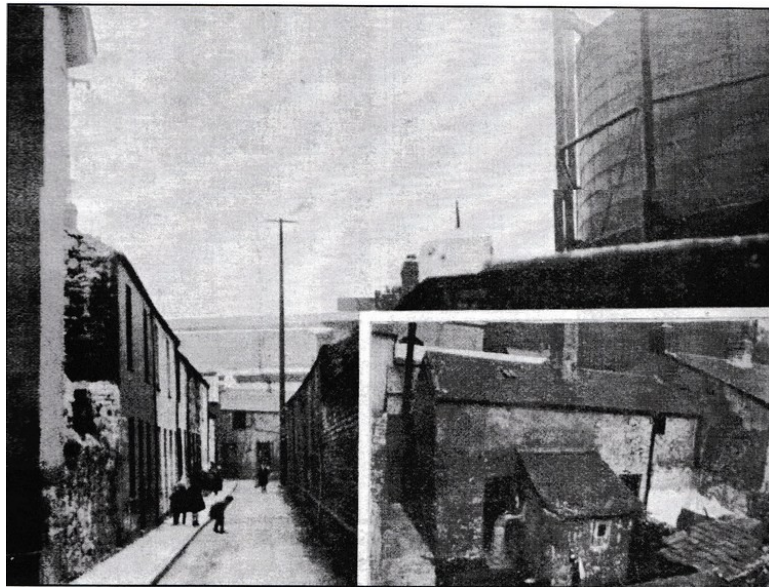




Taken from the rear of a High Street property with the roof and chimney of the Three Crowns pub, foreground left, County Theatre in the distance and London House foreground right.

Dean - Slum Streets -

BROOK ROW



From Dean Street, Gasometers to the right, Inset back of the west-most two houses on Brook Row

Well Street



Well Street, with Panton Street and Chapel Street junctions



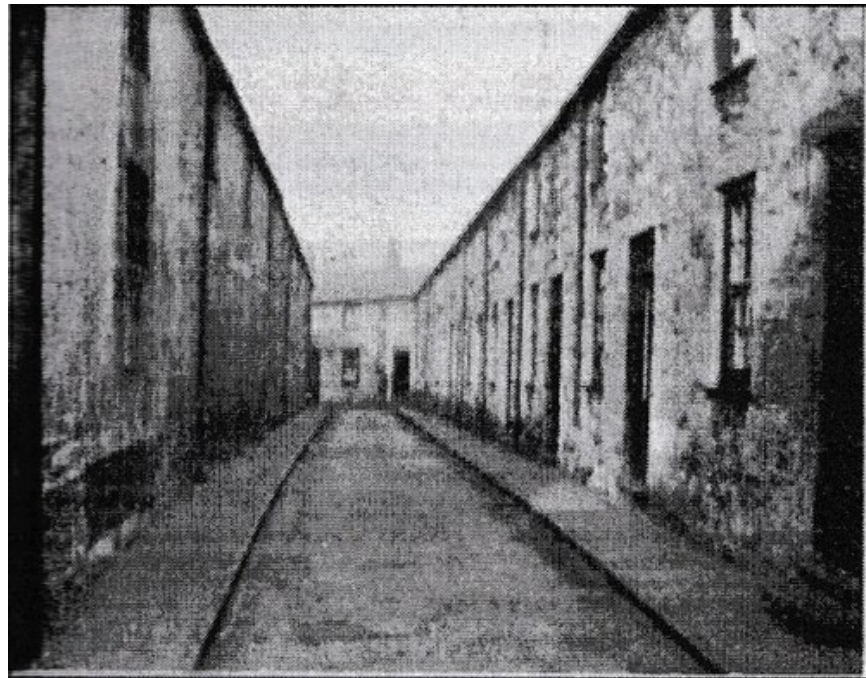
Well Street (looking towards High Street) Chapel St after white house.

Garden Street



Garden Street (Deans Court) from the West

Garden Square

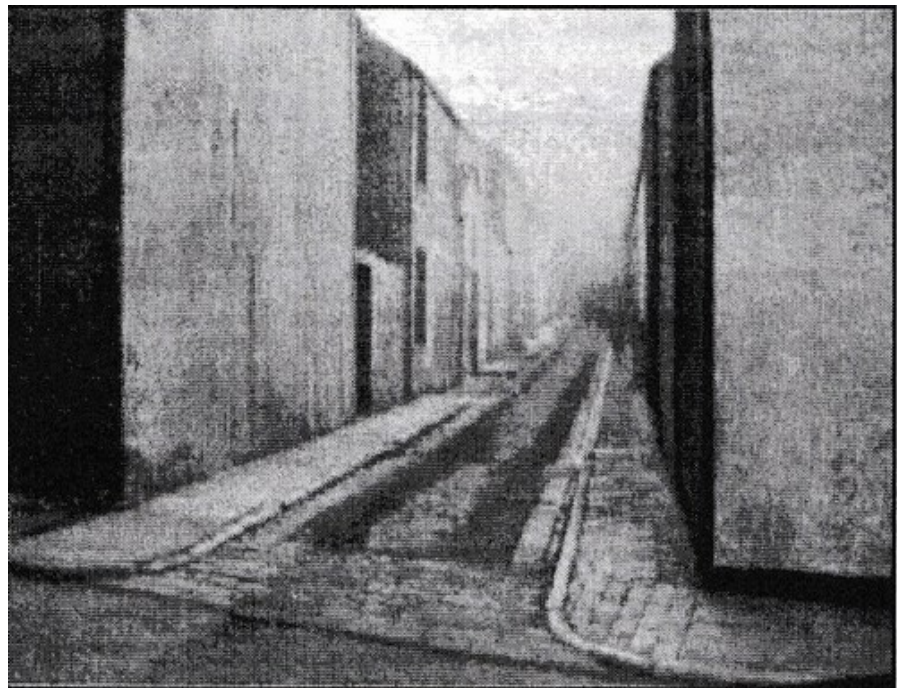


Garden Square from Well Street

Panton Street



Panton Street looking towards Dean Street & the New County Theatre



Panton Street from Dean Street

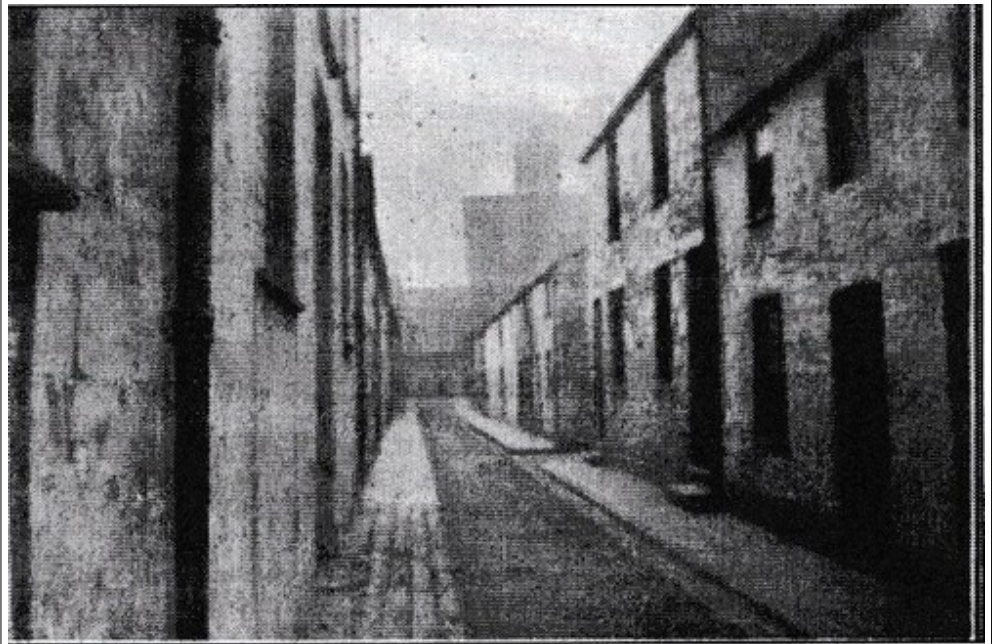


(back) Pantton Street



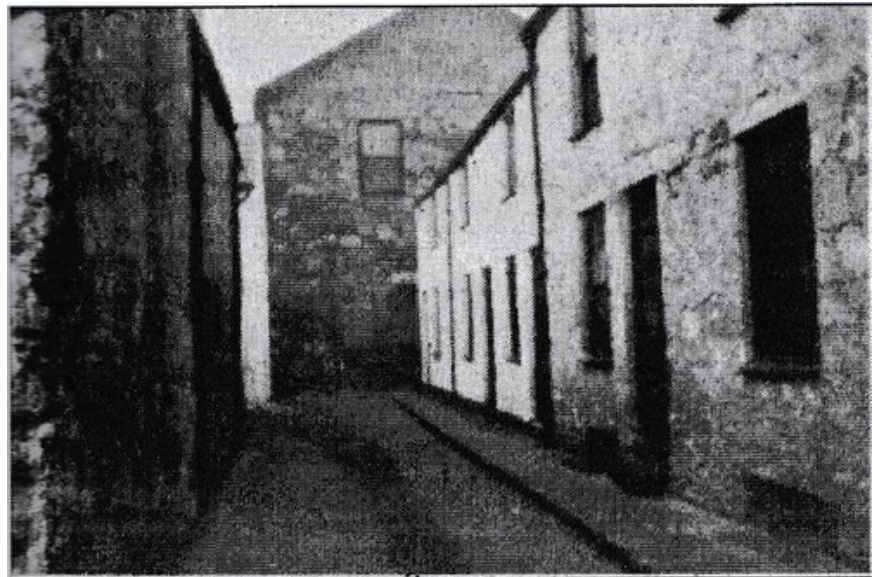
Pantton Street during clearance, back of London House and the Three Crowns PH on Well Street at the rear.

Union Street



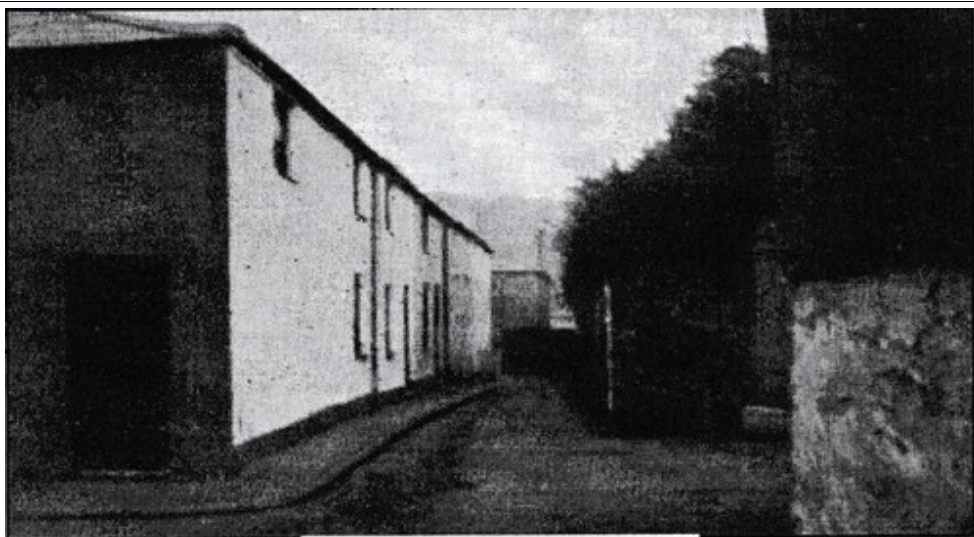
Union Street (from High Street)

Bethel Place



Bethel Place from Union Street

Infant Lane



Infant lane from Frondeg street

Loc TBC



Loc TBC



Pos. James' Street from High Street, is so the junction on the left would be Tabernacle Street and the house at the bottom "Frondeg"?

Chapel Street



Well Street at the junction of Chapel Street

Loc TBC

